

Programming Peripheral Support for FX1s, FX1N, FX2N and FX2Nc Supplementary Manual

This document describes the contents of the Windows version programming software for the FX1s, FX1N, FX2N and FX2Nc PLC.

The items described in this document are added to or changed in the software manual included in the package.



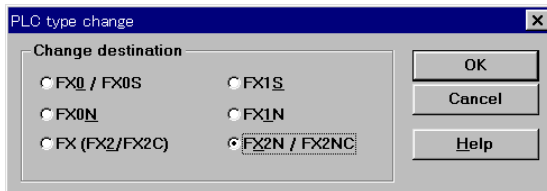
Relevant Products: FX-PCS/WIN-E Ver.3.00 or later.
FX-PCS/WIN-E Ver.3.10 or later.
FX-PCS/WIN-E Ver.3.30 or later.

1. Addition of Model Selection Menu [Ver.3.00 or later]

- On the "PLC type setting" screen, "FX1s" and "FX1N" are added as choices.



- FX1s and FX1N are added as choices in "PLC type change" screen. The interface to change PLC type has been changed to the window below.

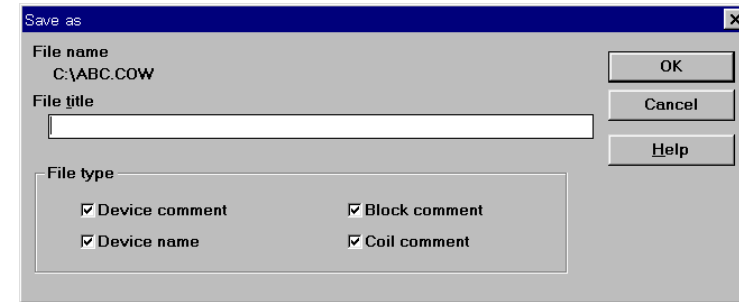


2. Availability of Applied Instructions for FX1s/FX1N PLC [Ver.3.10 or later]

- The following applied instructions are now available for the FX1s/FX1N PLC.
 - FNC155 (DABS)
 - FNC156 (ZRN)
 - FNC157 (PLSV)
 - FNC158 (DRVI)
 - FNC159 (DRVA)
 - FNC169 (HOUR)
 - FNC176 (RD3A)
 - FNC177 (WR3A)
 - FNC180 (EXTR)

3. Enhanced Comment Import/Export Function [Ver.3.10 or later]

When importing or exporting a comment, the comment type to be processed can be selected. If there are comment types which should not be imported or exported, uncheck the corresponding comment types boxes.

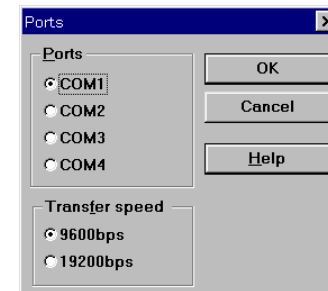


4. Improved Transfer speed with PLC [Ver.3.00 or later]

In "PLC"→"Ports", the transfer speed "19,200 bps" is added as a choice. ("9,600 bps" is selected at the time of delivery from the factory.)

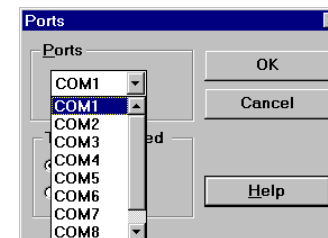
"19,200 bps" is available only in the FX1N/FX2N/FX2Nc Series PLC. In any other PLC, the transfer speed is automatically set to "9,600 bps"

Set the transfer speed to "9,600 bps" when using the REMOTE MAINTENANCE FUNCTION.



5. Supported COM port up to COM9 for connecting to PLC [Ver.3.30 or later]

In "PLC"→"Ports", the connection COM ports up to COM9 are supported.



Industrial automation

Elincom Group

European Union: www.elinco.eu

Russia: www.elinc.ru

6. Operation Environment

- Microsoft® Windows® 3.1 (386 enhanced mode)
- Microsoft® Windows® 95
- Microsoft® Windows® 98 [Ver.2.00 or later]
- Microsoft® Windows® Millennium Edition (Windows® Me) [Ver.3.10 or later]
- Microsoft® Windows NT® 4.0* Workstation (Service Pack3 or later) [Ver.3.30 or later]
- Microsoft® Windows® 2000* Professional [Ver.3.30 or later]
- Microsoft® Windows® XP* Home Edition or Professional [Ver.3.30 or later]

* Remote Maintenance cannot support with these operating systems.

Microsoft and Windows are registered trademarks of Microsoft Corporation.

Guidelines for the safety of the user and protection of the equipment

- Under no circumstances will Mitsubishi Electric be liable or responsible for any consequential damage that may arise as a result of the installation or use of this equipment.
- All examples and diagrams shown in this manual are intended only as an aid to understanding the text, not to guarantee operation. Mitsubishi Electric will accept no responsibility for actual use of the product based on these illustrative examples.
- Owing to the very great variety in possible application of this equipment, you must satisfy yourself as to its suitability for your specific application.



HEAD OFFICE : MITSUBISHI DENKI BLDG MARUNOUCHI TOKYO 100-8310 TELEX : J24532 CABLE MELCO TOKYO
HIMEJI WORKS : 840, CHUYODA CHO, HIMEJI, JAPAN

Specifications are subject to change without notice